



Titanium White (Linseed)
Series 1, Opaque, ASTM I
PW6, PW4



Titanium White (Safflower)
Series 1, Opaque, ASTM I
PW6, PW4



Zinc White
Series 1, Semi Opaque, ASTM I
PW4, PW6



Unbleached Titanium White
Series 1, Opaque, ASTM I
PW6:1



Bright Yellow Lake
Series 1, Semi Transparent, ASTM I-II
PY3



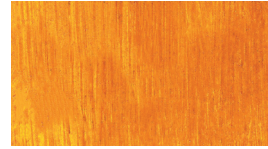
Cadmium Yellow Lemon Genuine
Series 4, Opaque, ASTM I
PY35



Yellow Lake
Series 2, Semi Transparent,
ASTM I-II
PY73



Cadmium Yellow Genuine
Series 4, Opaque, ASTM I
PY35



Indian Yellow Hue
Series 2, Transparent, ASTM I-II
PY83



Cadmium Yellow Deep Genuine
Series 4, Opaque, ASTM I
PY35



Cadmium Orange Genuine
Series 4, Opaque, ASTM I
PO20



Naphthol Vermillion
Series 3, Semi Opaque, ASTM I
PR188



Cadmium Red Light Genuine
Series 4, Opaque, ASTM I
PR108



Cadmium Red Genuine
Series 4, Opaque, ASTM I
PR108



Cadmium Red Deep Genuine
Series 4, Opaque, ASTM I
PR108



Alizarin Crimson
Series 3, Transparent, ASTM II
PR83



Brilliant Pink
Series 2, Opaque, ASTM I
PW4, PW6, PR188, PR209



Quinacridone Magenta
Series 3, Transparent, ASTM I
PR122



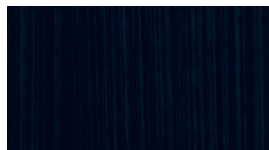
Manganese Violet
Series 3, Semi Transparent, ASTM I
PV16



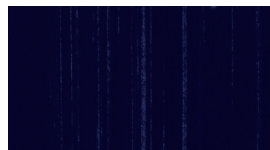
Ultramarine Violet
Series 2, Transparent, ASTM I
PV15



Violet Dioxazine
Series 3, Transparent, ASTM I
PV23



Indigo
Series 2, Semi Transparent, ASTM I
PBk6, PB15:3, PV19



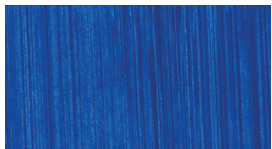
Prussian Blue
Series 1, Transparent, ASTM I
PB27



Phthalo Blue Green Shade
Series 2, Transparent, ASTM I
PB15:3



French Ultramarine Blue Red Shade
Series 1, Transparent, ASTM I
PB29



Cobalt Blue Genuine
Series 5, Semi Opaque, ASTM I
PB28



King's Blue Light
Series 2, Opaque, ASTM I
PW6, PW4, PB29



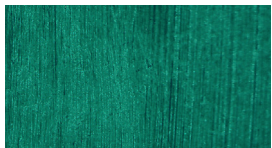
King's Blue Deep
Series 2, Opaque, ASTM I
PW6, PW4, PB29



Cerulean Blue Genuine
Series 5, Opaque, ASTM I
PB35



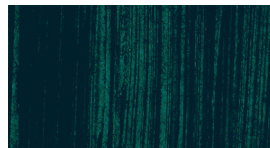
Phthalo Turquoise
Series 2, Opaque, ASTM I
PW4, PB15:3, PG7, PW6



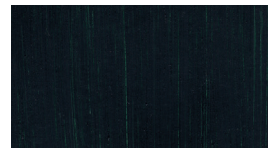
Viridian Green
Series 4, Semi Transparent,
ASTM I
PG18



Emerald Green
Series 2, Semi Opaque, ASTM I-II
PW6, PW4, PG7, PY3



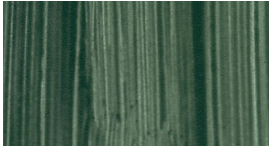
Phthalo Green
Series 2, Transparent, ASTM I
PG7



Sap Green
Series 2, Semi Opaque, ASTM I
PBr7, PG7, PY3

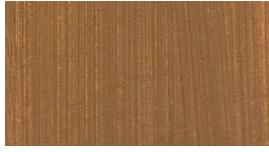


Chromium Oxide Green
Series 3, Opaque, ASTM I
PG17



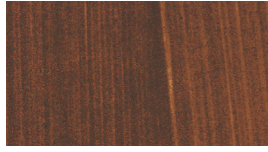
Terre Verte

Series I, Transparent, ASTM I
PG23



Yellow Ochre

Series I, Semi Opaque, ASTM I
PY42



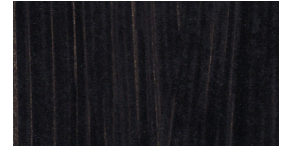
Raw Sienna

Series I, Semi Opaque, ASTM I
PBr7



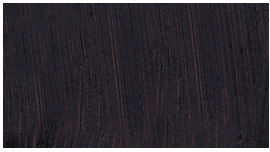
Burnt Sienna

Series I, Semi Opaque, ASTM I
PBr7



Raw Umber

Series I, Semi Transparent, ASTM I
PBr7



Burnt Umber

Series I, Semi Transparent,
ASTM I
PBr7



Payne's Grey

Series I, Semi Transparent, ASTM I
PB29, PBk9, PY42



Ivory Black

Series I, Semi Opaque, ASTM I
PBk9



Lamp Black

Series I, Semi Opaque, ASTM I
PBk6