

# Colour Mixing Guide by Parts

Firstly let's explore how we can create a wide range of new colours using just six inks. This set comprises of Process Cyan, Magenta, Yellow, Black, Opaque White and Extender.

The process colours have excellent lightfast ratings, but remember adding extender or opaque white will lower the overall lightfast rating of any ink.



Process Blue  
(Cyan)



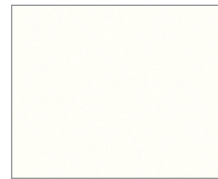
Process Red  
(Magenta)



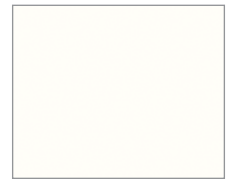
Process Yellow  
(Yellow)



Black



Opaque White



Extender

## MIXING RECIPES

Make sure all parts are mixed thoroughly and remember that the colours below are intended as a guide only.



**Red**  
2 parts Yellow +  
3 parts Magenta



**Blue Green**  
3 parts Cyan +  
2 parts Yellow



**Orange**  
4½ parts Yellow +  
½ part Magenta



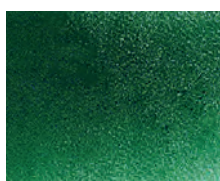
**Turquoise**  
4 parts Cyan +  
1 part Yellow



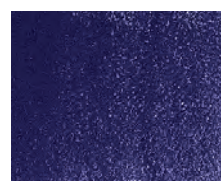
**Red-Orange**  
3 parts Yellow +  
2 parts Magenta



**Blue**  
3 parts Cyan +  
2 parts Magenta



**Green**  
2 parts Cyan +  
3 parts Yellow



**Blue-Violet**  
1 part Cyan +  
3 parts Magenta



**Yellow-Green**  
1 part Cyan +  
4 parts Yellow



**Violet**  
½ part Cyan +  
4½ parts Magenta



# Colour Mixing Guide by Parts

## USING BLACK

Take care when using Black as even a small addition can make a significant change. You will need less ink than you think! A very small addition of Black mixed with Orange will create a warm Yellow Ochre, but just a little more Black added to the same Orange mix will shift the colour quickly from Ochre to Olive. Always make Black the last colour you add to the mix and be aware that it will make your colours a little more opaque.

## WARM EARTH SHADES

Warm earth shades can be achieved by mixing red (two parts Y + 3 parts M) and then adding a little black to achieve the warm earth shade you require.



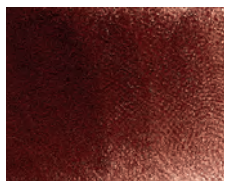
### Firstly make a Red base

2 parts Yellow +  
3 parts Magenta



### Burnt Sienna

Add a flick of Black to your Red base.



### Red Ochre

Now add a little more Black and see how you get on.



### Van Dyck Brown

Be brave, try adding still more Black to produce a pleasing Van Dyck Brown.

## VARIOUS COOL EARTH SHADES

Cooler earth shades are achieved from a base of red/orange (3 parts Y + 2 parts M) with a little black.



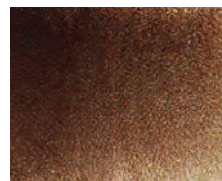
### Firstly make a Red-Orange base

3 parts Yellow +  
2 parts Magenta



### Cooler Burnt Sienna

See how a little Black provides a rich, cool-toned Burnt Sienna.



### Cooler Raw UMBER

By adding a flick more Black see how the cool earth shade takes on an almost Green undertone.



### Cooler Van Dyck Brown

There's still room for more Black to be added to produce a range of rich Brown/Blacks.

## USING OPAQUE WHITE & EXTENDER

You can use opaque white to lighten colours and increase opacity whereas extender will reduce colour intensity and provide transparency.



### Mid Blue

Equal parts of Opaque White & Cyan



### Violet

1 part Violet base +  
2 parts Extender



COLOUR LIKE NO OTHER

Discover more at [www.cranfield-colours.co.uk](http://www.cranfield-colours.co.uk)  
or follow our colourful world on...



Cranfield Colours Limited  
44-47 Springvale, Cwmbran, Torfaen NP44 5BB, Wales, UK

T. +44 (0)1633 861421 F. +44 (0)1633 864354

E. [hello@cranfield-colours.co.uk](mailto:hello@cranfield-colours.co.uk)

[www.cranfield-colours.co.uk](http://www.cranfield-colours.co.uk)